

CASE # 3 5 2

CONFIDENTIAL

For the
attention of
Detective

CRIME: Kidnapping

DATE: 14 January 1930

LOCATION: Unknown

DETAILS:

Eleanor Van Der Klint, heiress to the Van Der Klint Railroad fortune, has been kidnapped and your next assignment is to find her. We have two contacts who can help: Miss Amelia Harrison, the well known socialite and best friend of Miss Van Der Klint, and "Rotgut" Rodgers, the bootlegger. Use your knowledge of the city as well to find Miss Van Der Klint and arrest the kidnapper.

Commissioner Ashworth

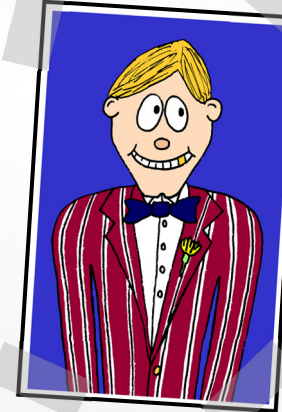
SUSPECTS:



Julya "The Fruitcake"
Whywhiskey

Home Country: Ukraine

Speakeasy: Pete's Party
Place



Hans "Warm Fingers"
Fäustlinge

Home Country: Germany

Speakeasy: Mikey's Fun
House



Helena "The Silk Scarf"
Barrett

Home Country: England

Speakeasy: Sal's
Sizzling Inn



Pascal "The Sparrow" Moineau

Home Country: France

Speakeasy: Godfather's Haven

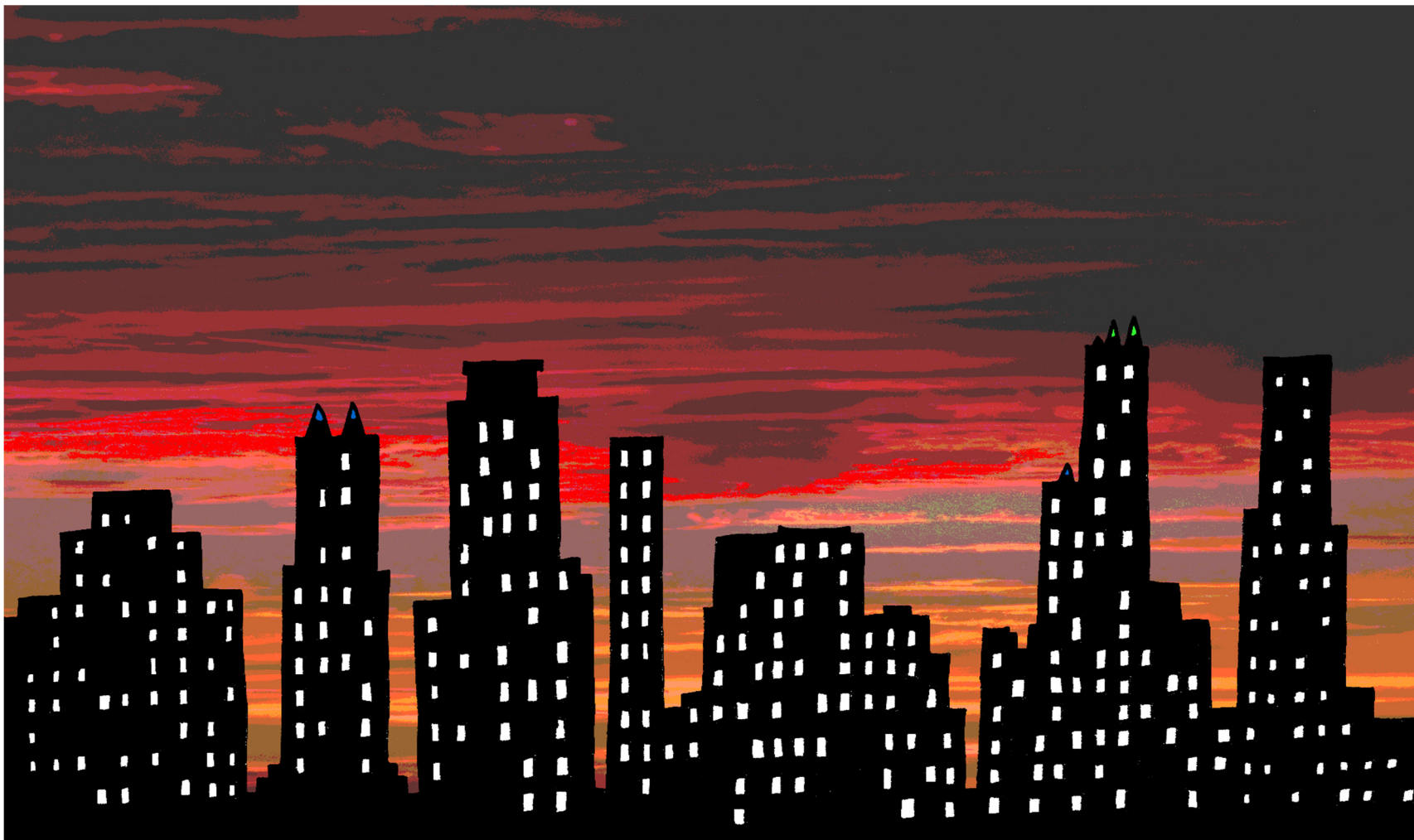


Nicky "Two Scars" Amello

Home Country: Italy

Speakeasy: Mama's Steakhouse

CASE: 352



8	A	B	C
7	D	E	F
6	G	H	I
5	J	K	L
4	M	N	O
3	P	Q	R
2	S	T	U
1	V	W	Y
	A	B	C

The city's vast and full of speakeasies... Work out the answer to each question and match it to one of the answers next to it. This gives you the code to a letter on the grid. Write that letter down at the bottom of the page. Once you have got them all, rearrange them to spell out the name of one of the speakeasies. You can rule out the criminal who has that one as their favourite...

$86 \div 2 =$	43	(C8)	44	(C4)	$75 \div 3 =$	25	(A2)	26	(B7)
$99 \div 3 =$	32	(B2)	33	(A8)	$88 \div 2 =$	43	(A7)	44	(B7)
$44 \div 2 =$	22	(B2)	23	(C8)	$65 \div 5 =$	12	(A6)	13	(C3)
$70 \div 5 =$	15	(B3)	14	(A3)	$96 \div 4 =$	24	(A3)	25	(B7)
$46 \div 2 =$	23	(B2)	22	(A7)	$72 \div 3 =$	23	(C3)	24	(C1)
$60 \div 4 =$	14	(B1)	15	(C5)	$50 \div 2 =$	25	(B7)	24	(C7)
$96 \div 3 =$	33	(A8)	32	(B7)	$60 \div 5 =$	13	(B6)	12	(A8)
					$92 \div 4 =$	22	(A7)	23	(A3)



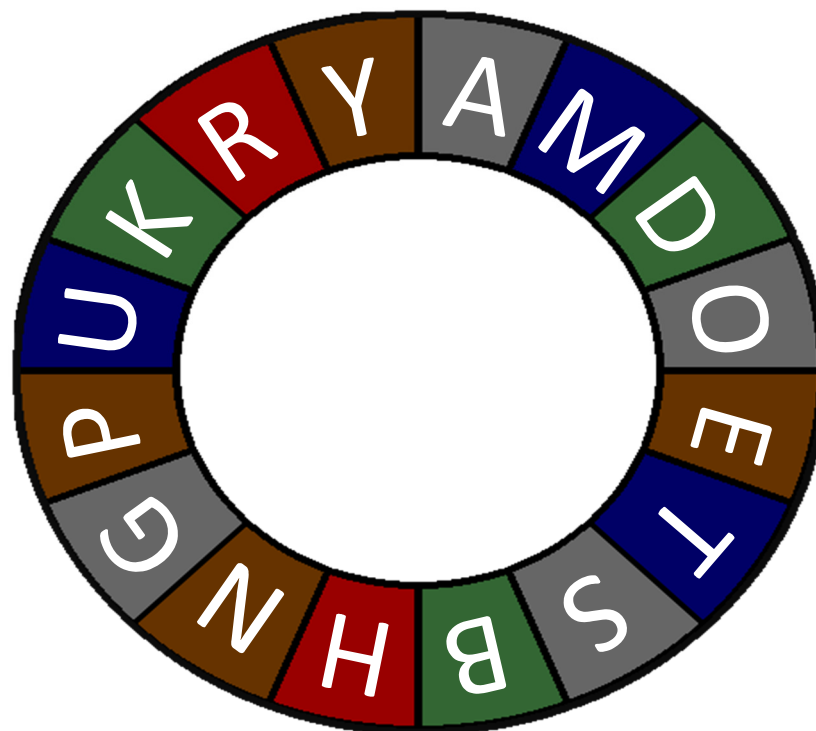
$$\begin{aligned}531 \div 6 &= \\8650 \div 9 &= \\295 \div 3 &= \\707 \div 6 &= \\251 \div 3 &= \\2903 \div 9 &= \\608 \div 7 &= \\3713 \div 6 &= \\282 \div 7 &= \\2398 \div 6 &= \\271 \div 6 &= \\3398 \div 4 &= \end{aligned}$$

We have found some new evidence! Work out the answers to the questions on the right and find the answers on the map. The place that you are left with is where one of your suspects comes from - you can rule them out...



Hello Detective. I've been given this code that may help you. Work out each answer and see which of the two choices in the code matches it. Then do what it says - C3, for example, means go clockwise three places around the ring. A4 means anticlockwise 4 places. Write that letter at the bottom of the sheet. When you've got all fifteen, rearrange them and it will give you the name of one criminal's speakeasy... You can rule that gangster out of your investigations. You need to start at A - that one is already done for you!

$308 \div 11 =$	29	(C2)	28	(C1)
$9568 \div 16 =$	598	(C7)	597	(A3)
$1196 \div 13 =$	91	(C3)	92	(A2)
$5808 \div 16 =$	363	(A2)	364	(A3)
$1746 \div 18 =$	97	(A7)	98	(A2)
$3276 \div 13 =$	251	(A3)	252	(C3)
$1140 \div 12 =$	96	(C1)	95	(C1)
$9044 \div 19 =$	476	(C4)	475	(A3)
$574 \div 14 =$	41	(A2)	42	(C3)
$4776 \div 12 =$	397	(C3)	398	(A7)
$852 \div 12 =$	72	(A3)	71	(A6)
$1353 \div 11 =$	123	(A2)	124	(A6)
$1349 \div 19 =$	70	(C1)	71	(A4)
$5302 \div 11 =$	482	(C6)	483	(A2)



A



Good afternoon Detective. I'm looking for a break - if you let me have this barrel I'll give you this code. You need to work out the answer to all of the questions and then write the letter that matches that number on the grid, underneath that answer each time it appears. Hopefully, you will then be able to rule out a suspect from your investigations...

$$958 \div 13 = A$$

$$4533 \div 15 = C$$

$$770 \div 17 = E$$

$$6862 \div 18 = F$$

$$1220 \div 15 = H$$

$$7611 \div 12 = I$$

$$238 \div 11 = N$$

$$8696 \div 19 = O$$

$$986 \div 11 = R$$

$$7916 \div 15 = S$$

$$1106 \div 12 = W$$

$$8673 \div 18 = Y$$

481 r 15	457 r 13			302 r 3	73 r 9	21 r 7			
		U							
302 r 3	89 r 7	457 r 13	527 r 11	527 r 11		457 r 13	381 r 4	381 r 4	
73 r 9	21 r 7	481 r 15	457 r 13	21 r 7	45 r 5		92 r 2	81 r 5	457 r 13
81 r 5	73 r 9	527 r 11		73 r 9			634 r 3	21 r 7	481 r 15
						T			
	634 r 3	89 r 7			381 r 4	457 r 13	89 r 7		73 r 9
B			D						
21 r 7	634 r 3	302 r 3		21 r 7	73 r 9		45 r 5		
			K			M			